



Custom
EXPRESSIONS

www.CEDraperyHardware.com

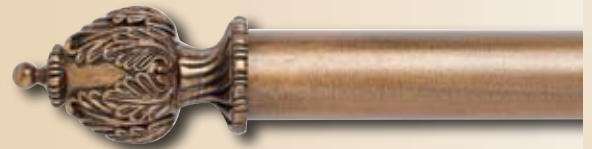
FINISH SELECTOR



TORTOISE
(809)



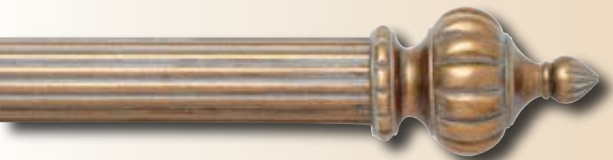
VENETIAN GOLD
(824)



ROASTED WALNUT
(855)



PAPYRUS
(859)



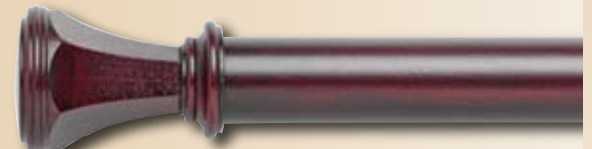
AGED GOLD
(821)



BLACKBERRY
(845)



ANTIQUE MAHOGANY
(803)



Choose a
COLLECTION
PRODUCT
FINISH
SIMPLIFIED PRICING



In addition to the 7 custom finishes, pick any color from the Benjamin Moore®, Duron®, or Sherwin-Williams™ color selector.

Let us know your choice and we will finish your product to compliment your room.

1 3/8" COLLECTION



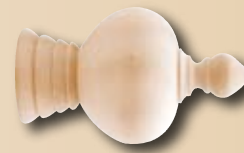
1057
Resin Finial
4 1/2" L x 2 3/4" H



14-126
Valencia Finial
4 3/8" L x 2 1/2" H



13-134
Crown Finial
4 1/2" L x 2 3/4" H



13-136
Orbit Finial
4 1/2" L x 2 3/4" H



13-137
Cambridge Finial
4 1/8" L x 2 7/8" H



13-108
Reeded Ball Finial
4" L x 2 3/4" H



13-133
Mission Finial
3 1/2" L x 2 7/8" H



14-127
Liberty Finial
4 5/8" L x 2 5/8" H



14-128
Newport Finial
4 1/2" L x 3 3/8" H



5011
Smooth Wood Ring
1 7/8" I.D. x 2 7/8" O.D.



13-140
Wood End Cap
7/8" L x 1 7/8" H



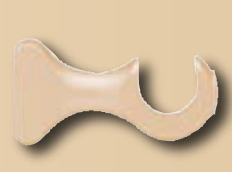
14-144
Bradford End Cap
7/8" L x 1 7/8" H



13-203
Traditional Bracket
3 3/4" H, 3 1/2" R, 3" C



13-206
Traditional Bracket
3 3/4" H, 6" R, 5" C



13-223
European Bracket
2 1/2" H, 3 1/2" R, 3" C



HOLDBACKS

Custom EXPRESSIONS



53-712
Petite Saturn Holdback
2 3/4" Dia., 2 3/4" or 4" Proj.



54-722
Petite Laurel Holdback
2 3/4" Dia., 2" or 4" Proj.



54-782
Petite Newport Holdback
2 3/4" Sq., 2" or 4" Proj.



54-756
Grand Imperial Holdback
6 1/4" Dia., 2 1/2" or 5" Proj.



53-714
Saturn Holdback
3 3/4" Dia., 2" or 4" Proj.



54-724
Laurel Holdback
3 3/4" Dia., 2" or 4" Proj.



54-784
Newport Holdback
3 3/4" Sq., 2" or 4" Proj.



54-786
Grand Newport Holdback
6 1/4" Sq., 2 1/2" or 5" Proj.

Simplified Pricing

L = Length
H = Height
C = Clearance
R = Return

2 1/4" COLLECTION



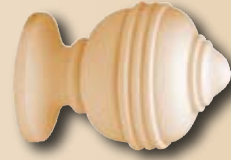
1030
Resin Finial
5 1/4" L x 4" H



1037
Resin Finial
5" L x 3 1/2" H



1052
Resin Finial
5" L x 3 1/2" H



1058
Resin Finial
4 1/4" L x 3" H



1063
Resin Finial
7" L x 4" H



1069
Resin Finial
6 1/2" L x 3 1/2" H



24-126
Valencia Finial
5 3/4" L x 3 3/8" H



23-134
Crown Finial
5 7/8" L x 3 5/8" H



23-136
Orbit Finial
6 1/4" L x 3 3/4" H



23-137
Cambridge Finial
5 1/2" L x 3 3/4" H



23-108
Reeded Ball Finial
5 3/8" L x 3 3/8" H



23-133
Mission Finial
5 1/4" L x 3 3/4" H



24-127
Liberty Finial
6 1/2" L x 3 5/8" H



24-128
Newport Finial
6" L x 4 3/8" H



1102
Resin Finial
3 7/8" L x 3 7/8" H



23-140
Wood End Cap
1 3/8" L x 3" H



24-144
Bradford End Cap
1 3/8" L x 3" H



5045
Ribbed Wood Ring
2 3/4" I.D. x 4 1/4" O.D.



5044
Bradford Resin Ring
3 1/4" I.D. x 4 5/8" O.D.



23-204
Traditional Bracket
5 1/2" H, 4 1/4" R, 3" C



23-207
Traditional Bracket
5 1/2" H, 7" R, 6" C



23-224
European Bracket
4 5/8" H, 4 1/4" R, 3" C

Available in Smooth & Reeded Poles

TORTOISE (809)



VENETIAN GOLD (824)



ROASTED WALNUT (855)



PAPYRUS (859)



3" COLLECTION



2030
Resin Finial
7" L x 5" H



1064
Resin Finial
9 1/2" L x 5" H



34-126
Valencia Finial
6 3/4" L x 3 7/8" H



33-134
Crown Finial
6 1/2" L x 4 1/4" H



33-136
Orbit Finial
6 1/2" L x 4 1/4" H



33-137
Cambridge Finial
6 1/4" L x 4 1/4" H



33-108
Reeded Ball Finial
6 1/8" L x 4 3/8" H



33-133
Mission Finial
6" L x 4 3/8" H



34-127
Liberty Finial
7 1/2" L x 4 1/2" H



34-128
Newport Finial
6 1/4" L x 4 5/8" H



1002
Resin Finial
3 1/2" L x 5" H



33-140
Wood End Cap
2" L x 4 1/8" H



34-144
Bradford End Cap
2" L x 4 1/8" H



5146
Ribbed Wood Ring
3 3/4" I.D. x 5 1/8" O.D.



5148
Bradford Resin Ring
3 1/2" I.D. x 4 7/8" O.D.



33-204
Traditional Bracket
6 1/4" H, 4 1/4" R, 3" C



33-207
Traditional Bracket
6 1/4" H, 7" R, 6" C



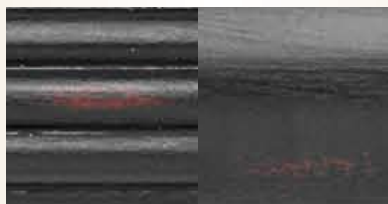
33-224
European Bracket
6 1/4" H, 4 1/4" R, 3" C

and Traverse Rod Sets

AGED GOLD (821)

BLACKBERRY (845)

ANTIQUÉ MAHOGANY (803)



ORDERING INSTRUCTIONS

Specify the Following When Ordering:

- 1 3/8", 2 1/4" and 3" Collection
- Finish
- Finial or End Cap
- Pole or Traverse Rod
- Bracket
- Rings
- Holdbacks

Custom Expressions Highlights:

- 7 Custom Finishes or *Pick Any Color* from Benjamin Moore®, Sherwin Williams™ or Duron®.
- 1 3/8", 2 1/4", and 3" Poles, Finials, Accessories, and Traverse Rods.
- Choice of Best Selling Wood and Resin Finials shown in Custom Expressions Brochure but also can choose from complete Select Wood Collection.
- Easy to Price - Same price for all finishes and all finials per collection.
- Traverse Rods assembled with new Select Tracks coordinated with Bronze or Aluminum finish. Decorative Traverse rings available for 2 1/4" and 3".
- Poles and Traverse Rods priced by the foot.
- Double Mount Traverse Rods available.

Delivery:

Custom Expressions products will ship within 15 working days.

2009CEXPS - 7 Finish Samples

Custom Expressions Finish Samples and photographs represent the standard finishes. All finishes are hand finished, therefore there may be noticeable differences between the finish samples or photographs and the finished product.

Custom Expressions Traverse Rod Assembled Sets:

- Includes approximately 3.5 carriers or rings per foot, standard installation brackets (3"- 4" Rtn.), center support bracket cover, and tension pulley. Additional rings are available.
- Heavy Duty anodized aluminum tracks are standard, available in Bronze or Aluminum finish.
- Drapery weight - 4 lbs. per foot.
- Maximum continuous set length - 16 ft. Maximum continuous set length with a mitered return - 15 ft.
- Maximum set length - 32 ft. Must be 2-way draw. Track and fascia will butt together or custom splice available.

